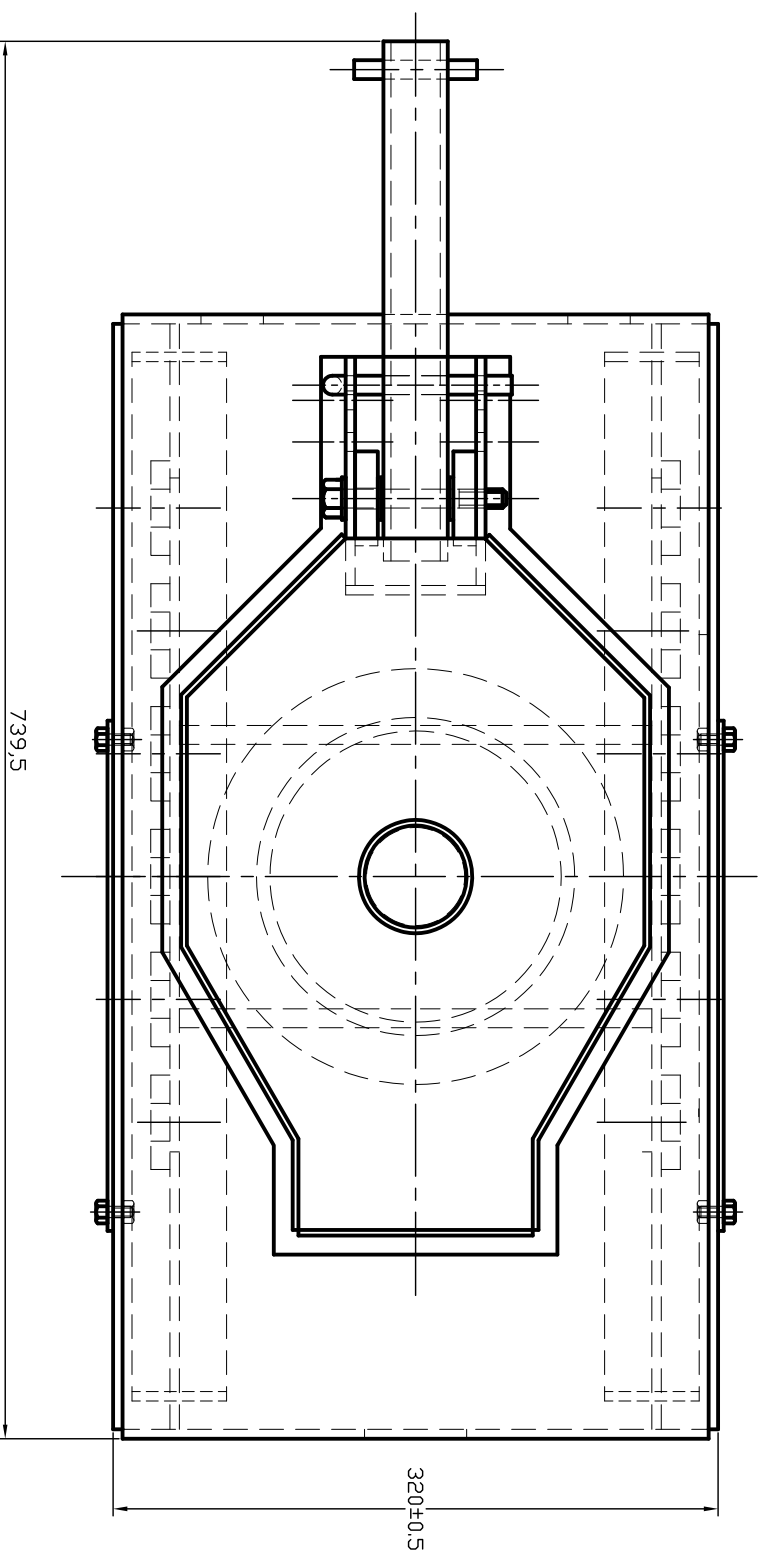
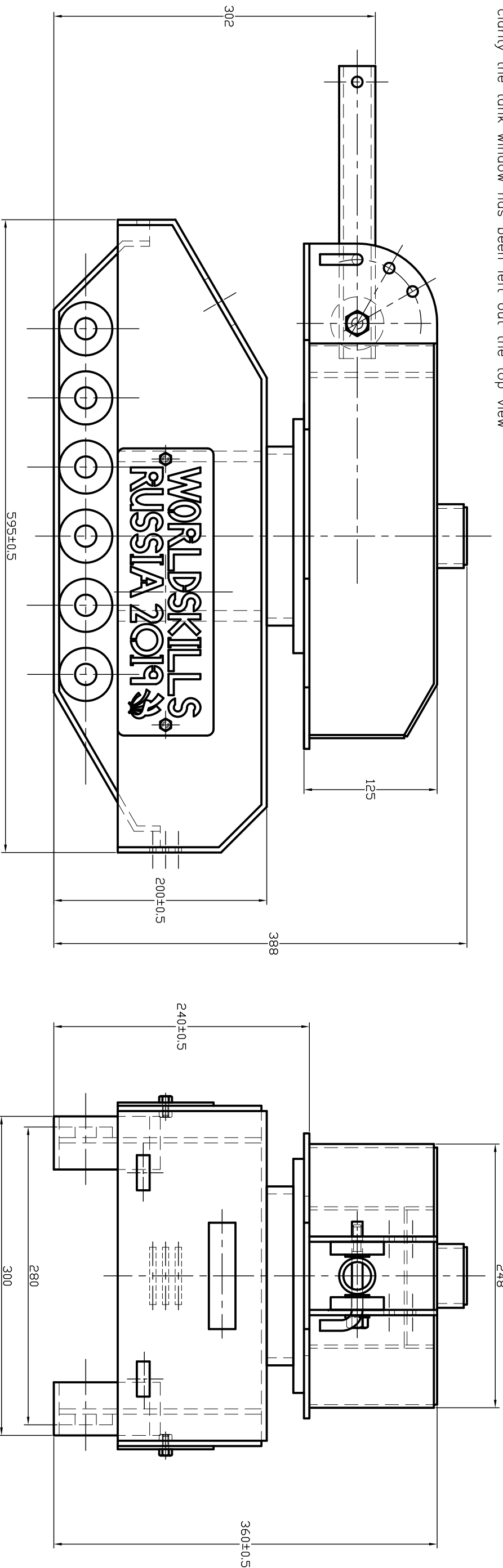


GENERAL NOTES:-
 General Tolerance will be between $\pm 1.0\text{mm}$
 For clarity the tank window has been left out the top view



Test Project for the 45th
 WorldSkills
 Competition in Kazan, Russia
 2019.
 Copyright © 2019 WorldSkills
 International.
 All Rights Reserved.



TECHNICAL DESCRIPTION

- SQUARENESS
- FLATNESS
- PARALLELISM
- PRIMARY DIMENSIONS
- SECONDARY DIMENSIONS

Skill:- 42 Construction Metal Work

Scale: 1:4

Date: 06-7-18

Paper: A3

Drawn / Design by: J.SHARPLES & M. SNACKENBERG

Description:- Russian Tank

Drawing Name:
 General Arrangement

Drawing No: 1 of 9

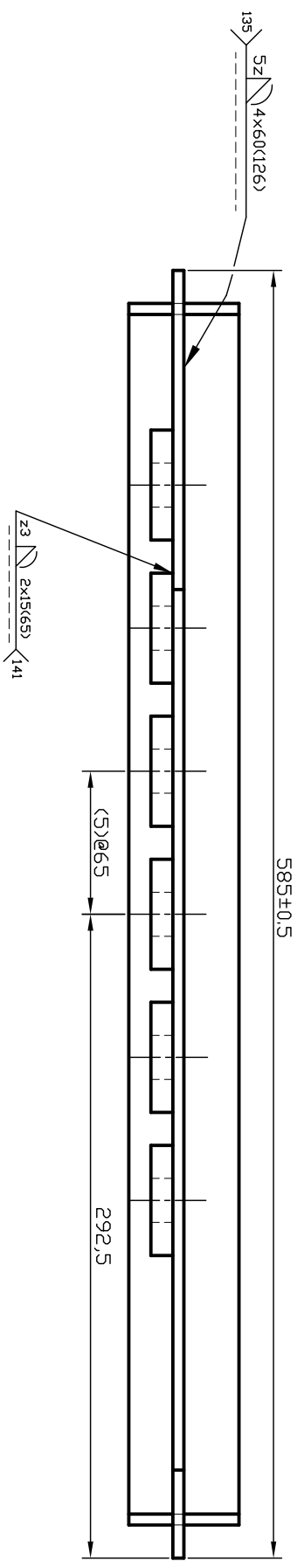
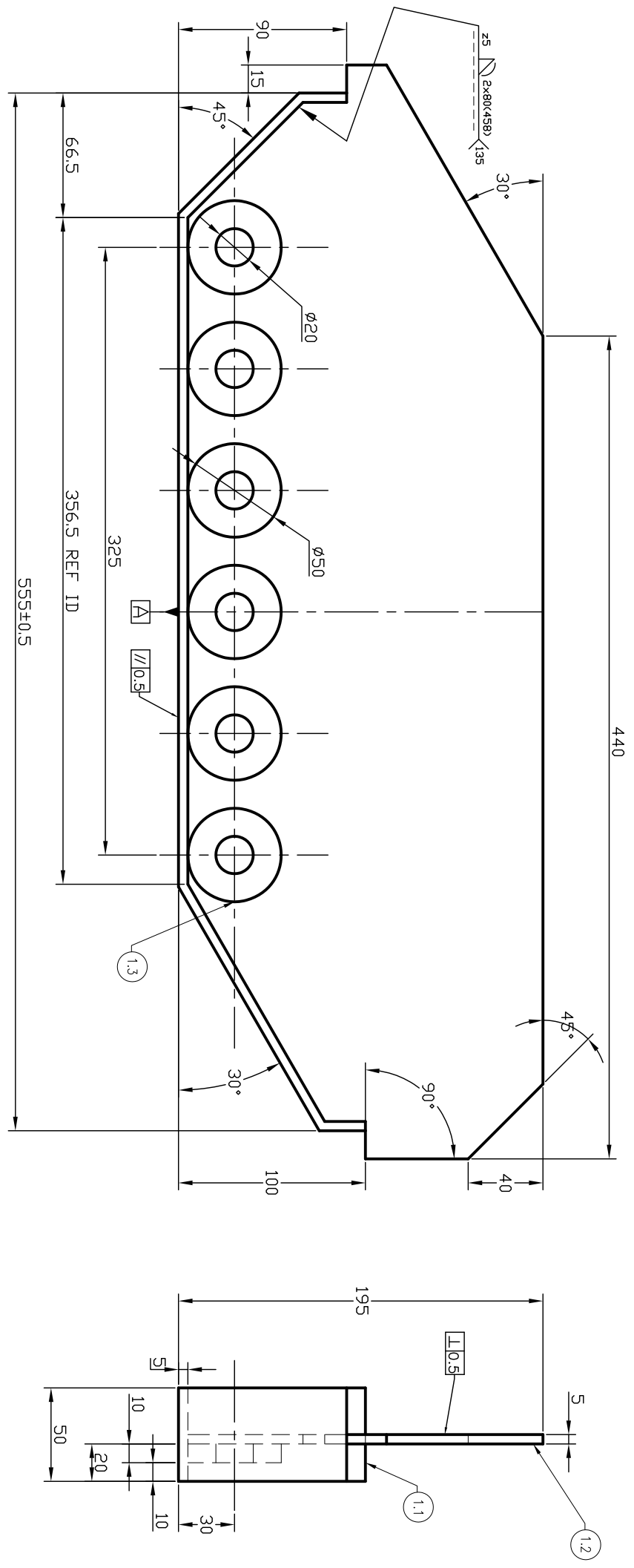
Revi: Ver 4

Appd :Worldskills

Page:

Sign:





GENERAL NOTES:-
 General Tolerance ±1.0mm
 ITEM 1.3 IS A SUPPLIED LASER CUT PART
 356.5 measurement is a inside dimension on part 1.2
 570.65 measurement is (S) 65mm centers on part 1.2
 MODULE ONE WILL BE CHECK FOR TECHNICAL PERFECTION IN PARALLELISM & SQUARENESS
 [L0.5]A [L0.5]A General Tolerance ±0.5mm

General Welding Notes
 All welds symbols
 - indicate welding process to be used
 - welds type required

| ITEM | DESCRIPTION | QTY | MAT'L |
|------|--------------------------|-----|-------|
| 1.3 | TRACK ROLLERS 10mm PLATE | 12 | M/S |
| 1.2 | TRACK SIDE 5mm PLATE | 2 | M/S |
| 1.1 | BOTTOM TRACK 5mm PLATE | 2 | M/S |

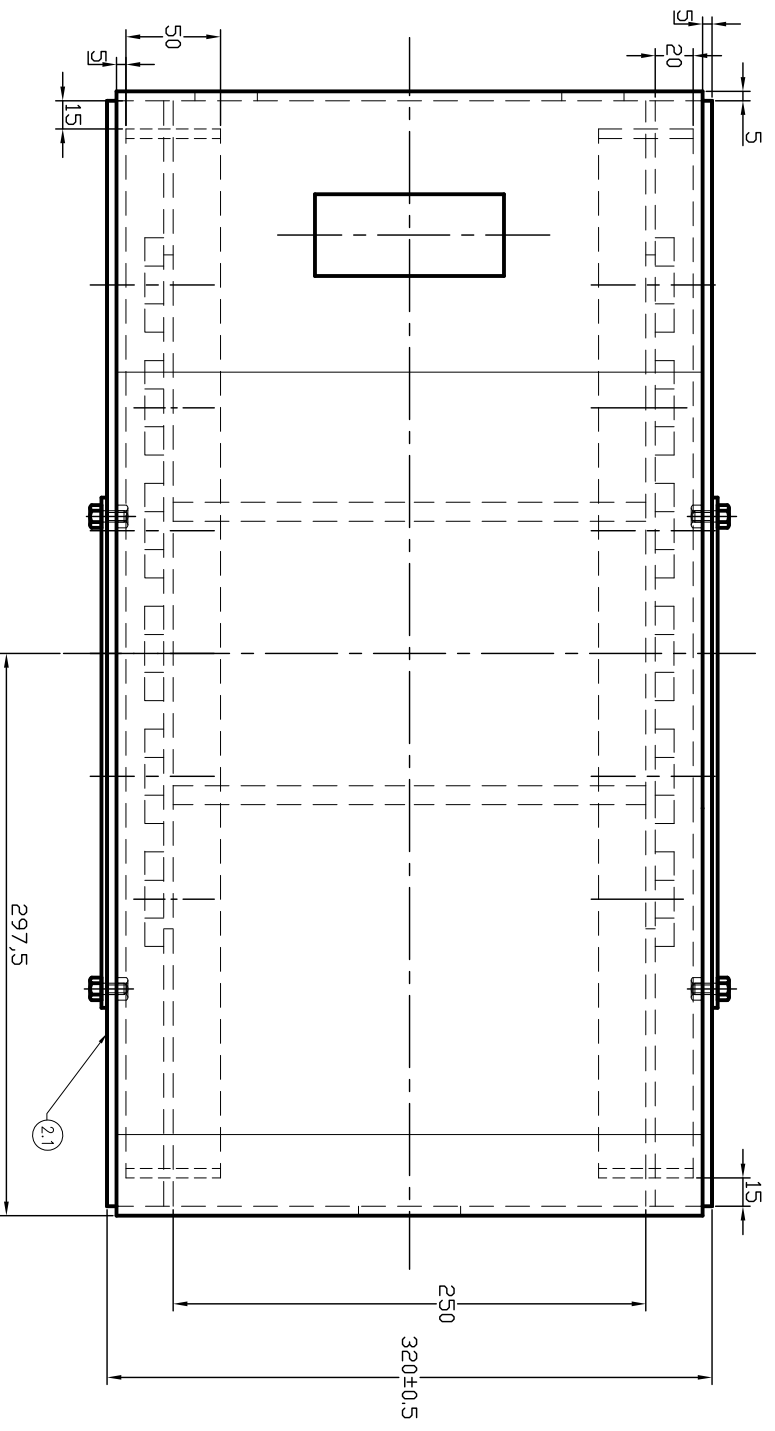
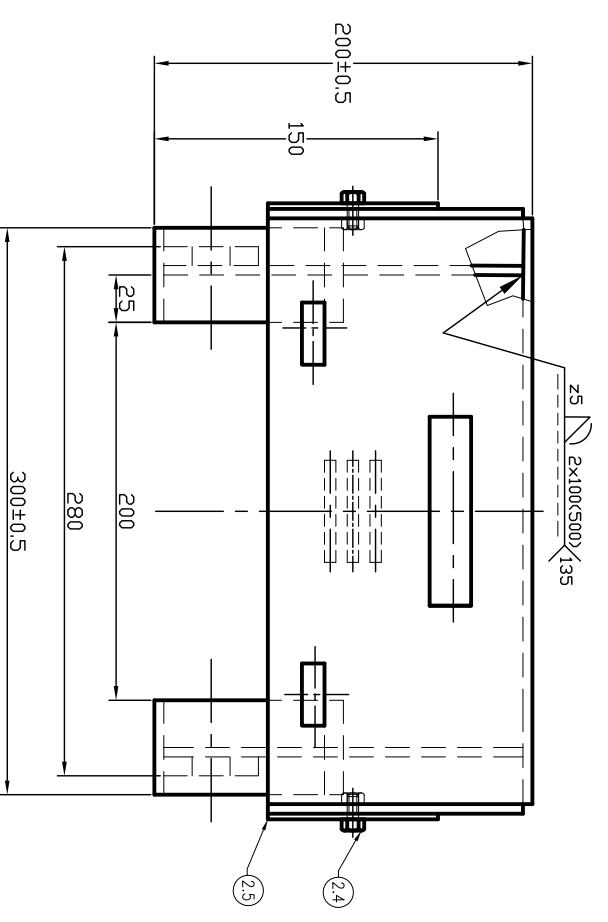
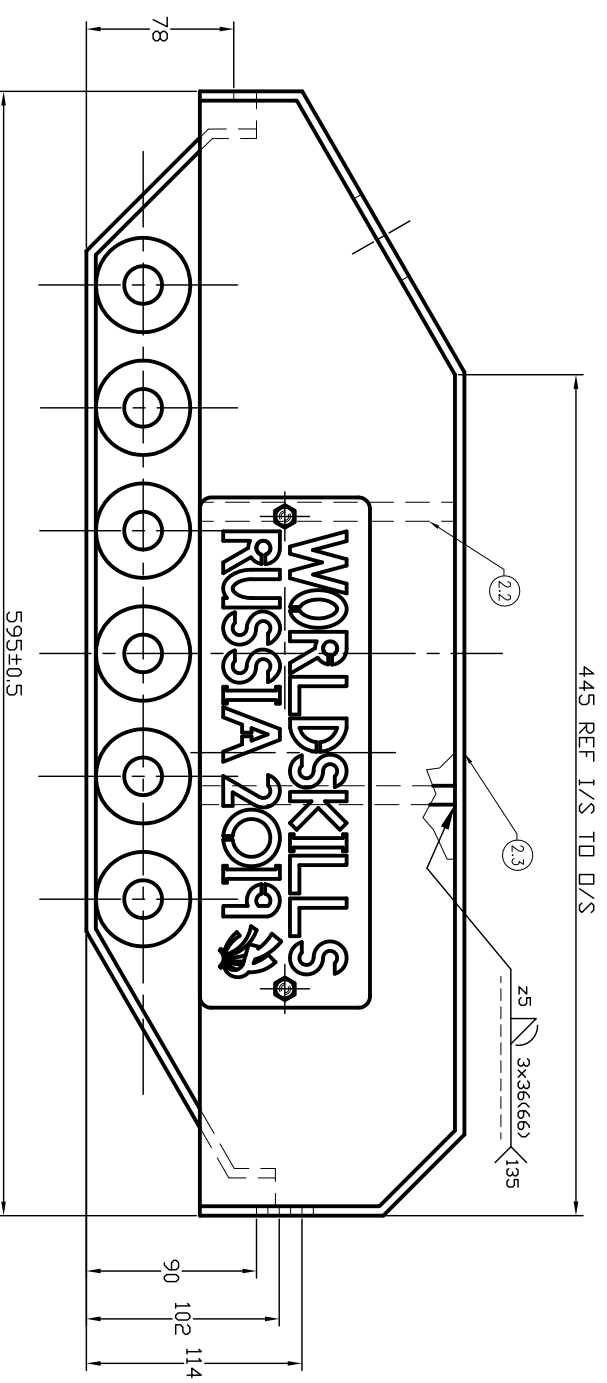
Test Project for the 45th
 WorldSkills
 Competition in Kazan, Russia
 2019.
 Copyright © 2019 WorldSkills
 International.
 All Rights Reserved.



| TECHNICAL DESCRIPTION |
|--------------------------|
| [L] SQUARENESS |
| [F] FLATNESS |
| [//] PARALLELISM |
| [] PRIMARY DIMENSIONS |
| [] SECONDARY DIMENSIONS |

| | | |
|------------------------------------|--|-----------|
| Skill:- 42 Construction Metal Work | Date: 06-7-18 | Paper: A3 |
| Scale: 1:3 | Drawn / Design by: J.SHARPLES & M. SNACKENBERG | |
| | Description:- Russian Tank | |

| | | |
|--|--------------------|------------------|
| Drawing Name: Module One Tank Track System | Drawing No: 2 of 9 | Page: [Image] |
| Rev: Ver 4 | Appd :Worldskills | Page: [Image] |
| | Sign: | |



GENERAL NOTES:-
 General Tolerance ±1.0mm
 Part 2.5 is a supplied laser cut part
 Part 2.4 is a supplied part
 445 measurement is ref inside point to outside point part 2.3
 General Welding Notes
 All welds symbols
 — indicate welding process to be used
 — welds type required

| ITEM | DESCRIPTION | QTY | MAT'L |
|------|---------------------------|-----|-------|
| 2.5 | WORLDSKILLS 3mm SHEET | 2 | ALUM |
| 2.4 | Ø6mm BOLTS & NUTS | 4 | M/S |
| 2.3 | CHASSIS TOP 5mm PLATE | 1 | M/S |
| 2.2 | SPACER GUSSETS 10mm PLATE | 2 | M/S |
| 2.1 | SIDE PLATES 5mm PLATE | 2 | M/S |

Test Project for the 45th
 WorldSkills
 Competition in Kazan, Russia
 2019.
 Copyright © 2019 WorldSkills
 International.
 All Rights Reserved.



| TECHNICAL DESCRIPTION | PRIMARY DIMENSIONS | SECONDARY DIMENSIONS |
|-----------------------|--------------------|----------------------|
| SQUARENESS | [Symbol] | [Symbol] |
| FLATNESS | [Symbol] | [Symbol] |
| PARALLELISM | [Symbol] | [Symbol] |

| | | |
|------------------------------------|--|-----------|
| Skill:- 42 Construction Metal Work | Date: 06-7-18 | Paper: A3 |
| Scale: 1:4 | Drawn / Design by: J.SHARPLES & M. SNACKENBERG | |
| | Description:- Russian Tank | |

| | | |
|------------------------------------|--------------------|-------------------|
| Drawing Name: Modules One & Two | Drawing No: 3 of 9 | Page: [Symbol] |
| Rev: Ver 4 | Appd :Worldskills | Page: [Symbol] |
| | Sign: | |

1

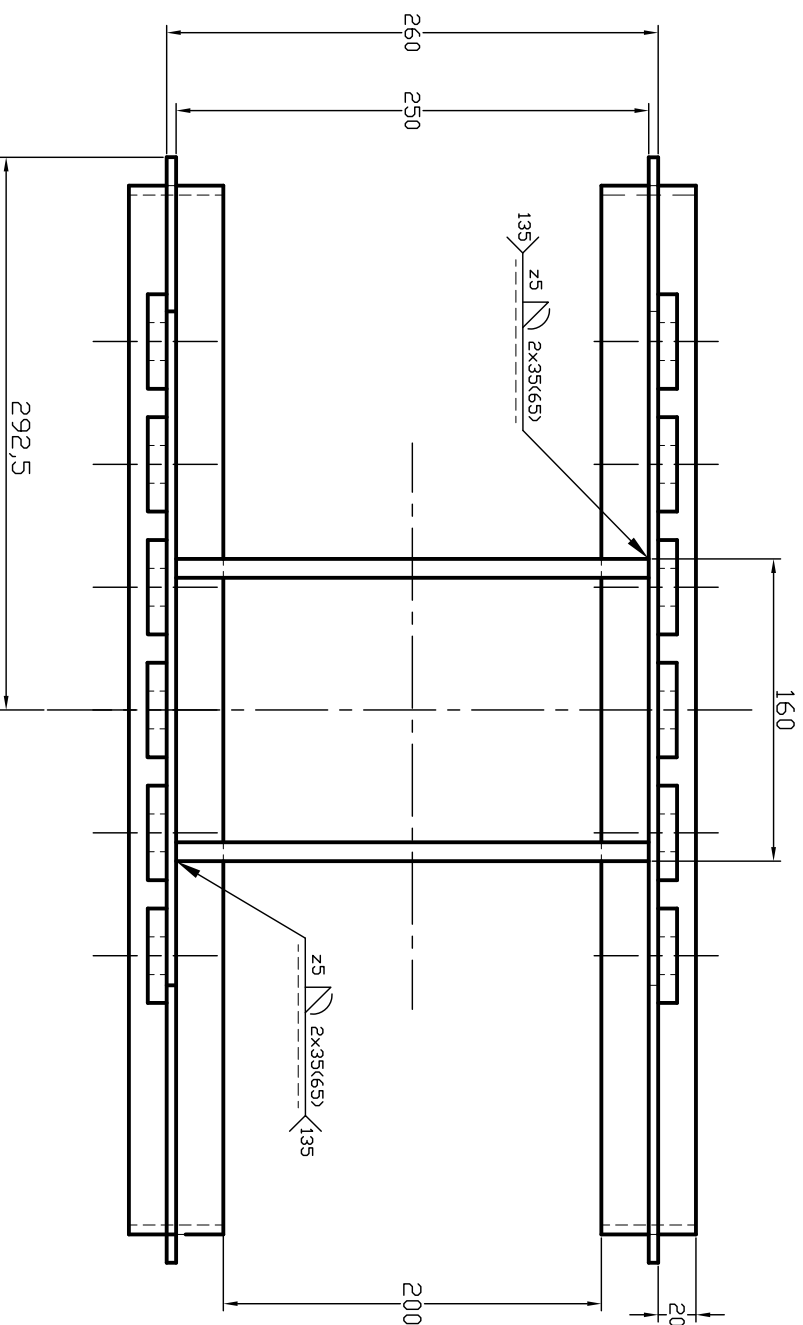
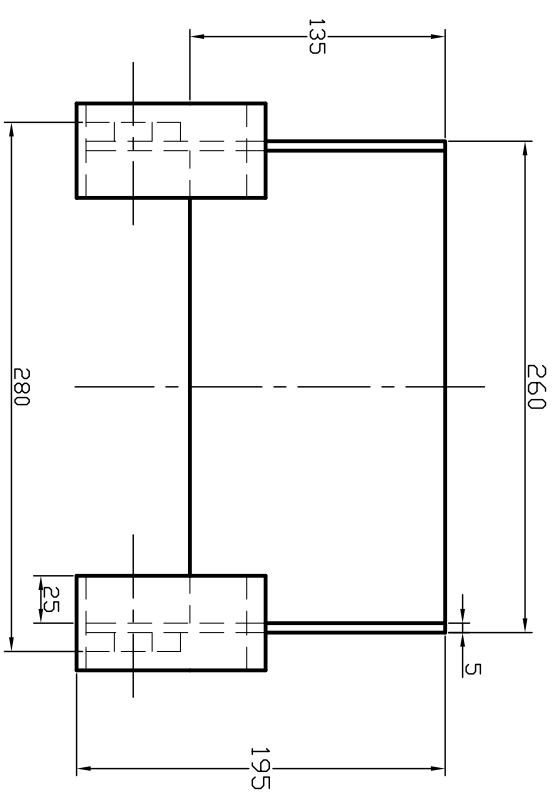
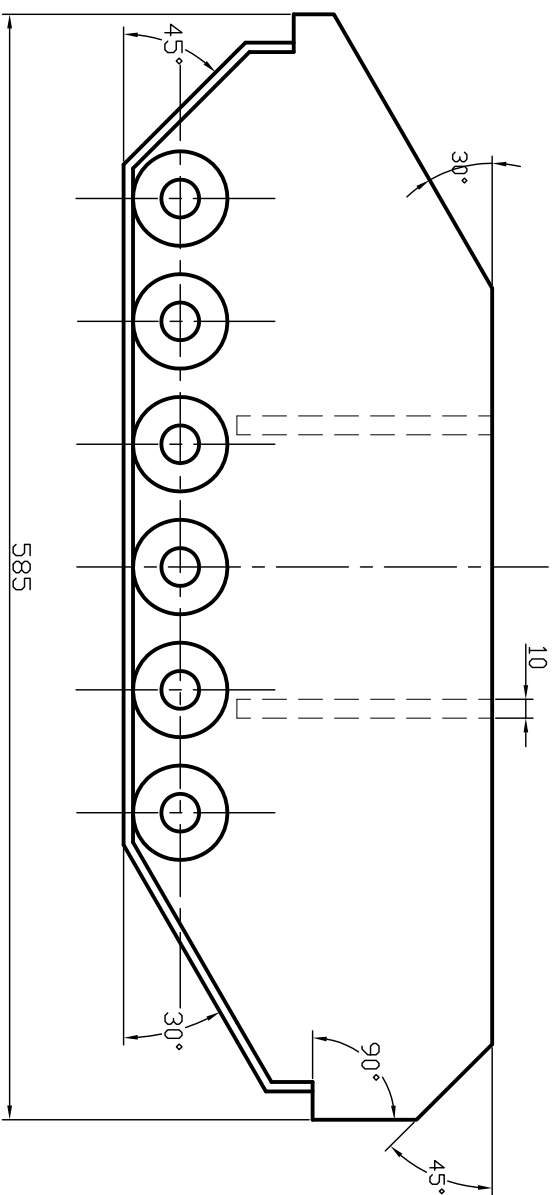
2

3

4

5

6



GENERAL NOTES:-
 General Tolerance will be $\pm 1.0\text{mm}$
 General Welding Notes
 All welds symbols
 - indicate welding process to be used
 - welds type required

Test Project for the 45th
 WorldSkills
 Competition in Kazan, Russia
 2019.
 Copyright © 2019 WorldSkills
 International.
 All Rights Reserved.



TECHNICAL DESCRIPTION

- SQUARENESS
- FLATNESS
- PARALLELISM
- PRIMARY DIMENSIONS
- SECONDARY DIMENSIONS

Skill:- 42 Construction Metal Work

Scale: 1:4

Date: 06-7-18

Paper: A3

Drawn / Design by: J.SHARPLES & M. SNACKENBERG

Description:- Russian Tank

Drawing Name:

Modules One & Two
 Tracking System Assembly

Drawing No: 4 of 9

Revi: Ver 4

Page:

Appd :Worldskills

Sign:



1

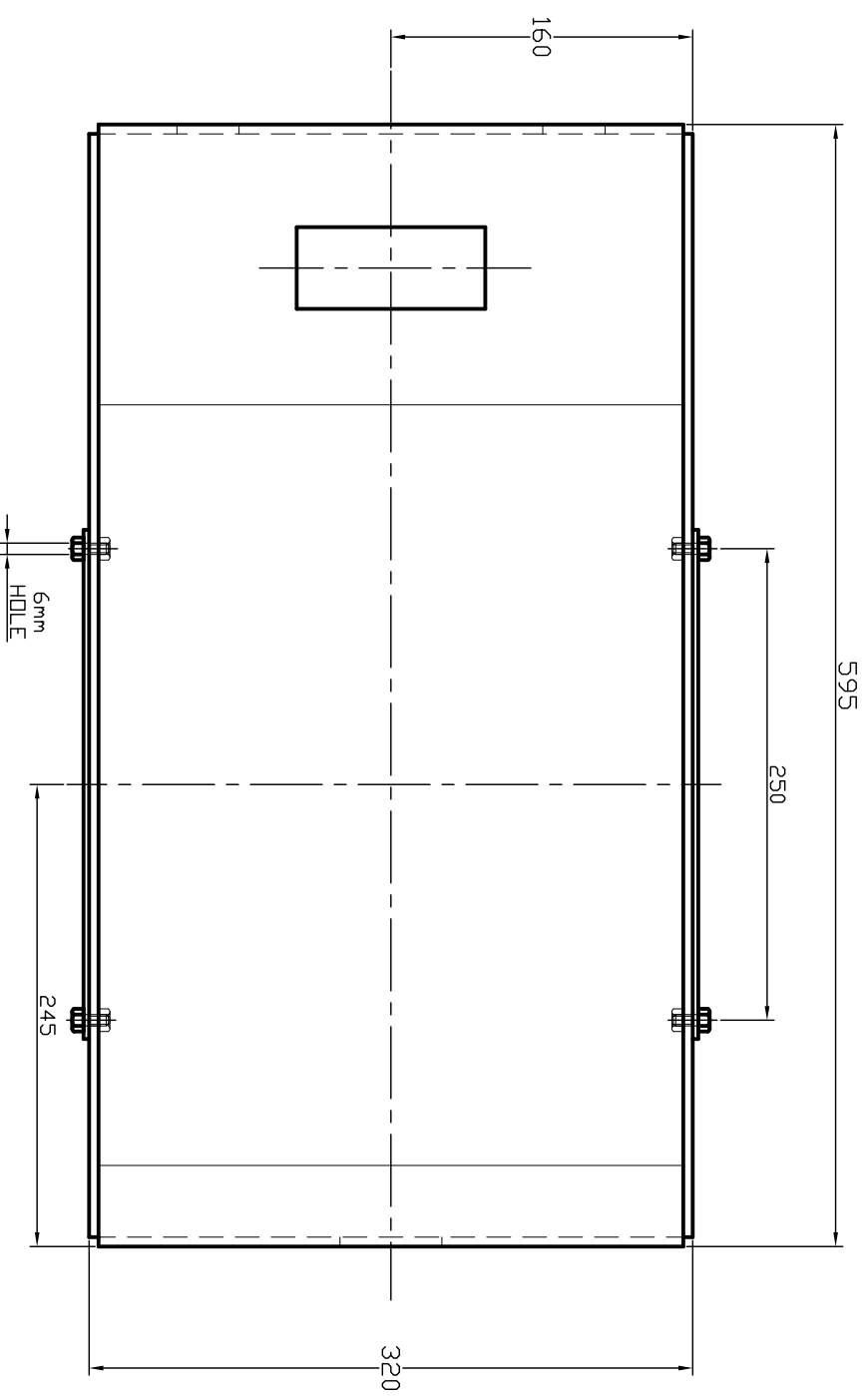
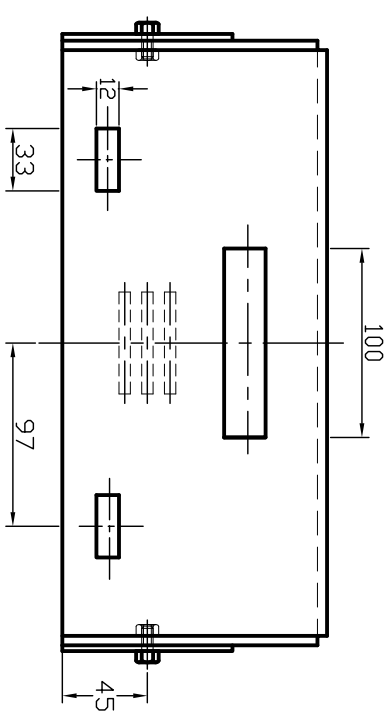
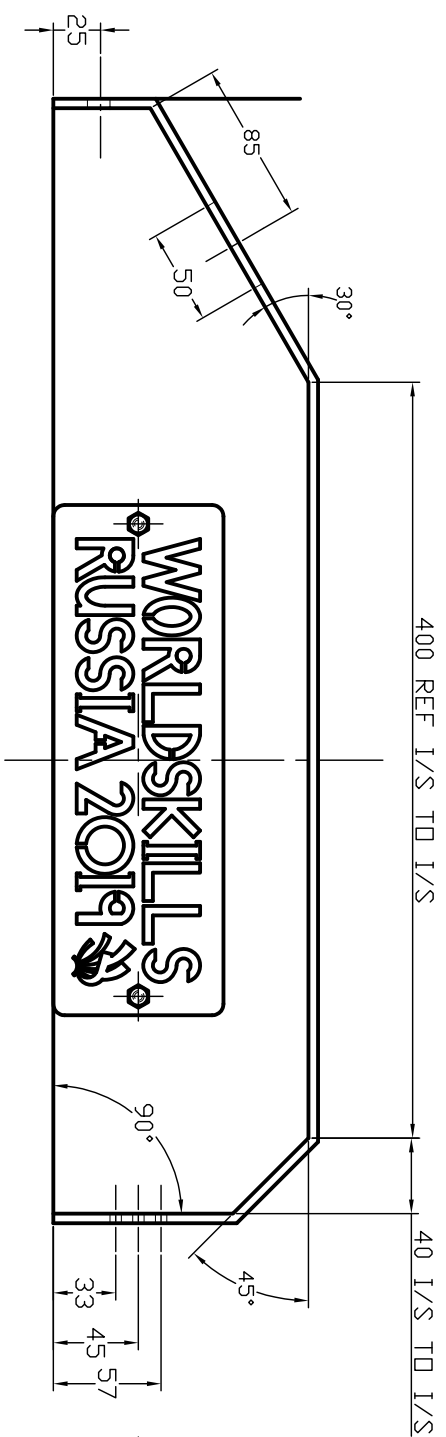
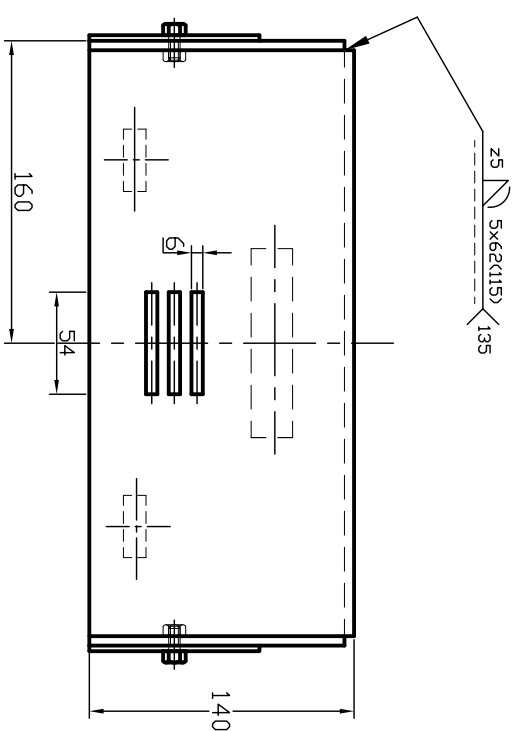
2

3

4

5

6



GENERAL NOTES:-
 General Tolerance will $\pm 1.0\text{mm}$
 440 & 40mm measurement is inside to inside points on part 2.3
 85mm measurement is from inside to center line of the slot on part 2.3
 General Welding Notes
 All welds symbols
 – indicate welding process to be used
 – welds type required

Test Project for the 45th
 WorldSkills
 Competition in Kazan, Russia
 2019.
 Copyright © 2019 WorldSkills
 International.
 All Rights Reserved.



| TECHNICAL DESCRIPTION | |
|-----------------------|----------------------|
| | SQUARENESS |
| | FLATNESS |
| | PARALLELISM |
| | PRIMARY DIMENSIONS |
| | SECONDARY DIMENSIONS |

| | |
|--|---------------|
| Skill:- 42 Construction Metal Work | |
| Scale: 1:4 | Date: 06-7-18 |
| Paper: A3 | |
| Drawn / Design by: J.SHARPLES & M. SNACKENBERG | |
| Description:- Russian Tank | |

| | |
|---|-----------|
| Drawing Name: Module Two Tank Cover & Tower Support | |
| Drawing No: 5 of 9 | Page: |
| Rev: Ver 4 | Page: |
| Appd :Worldskills | Sign: |

1

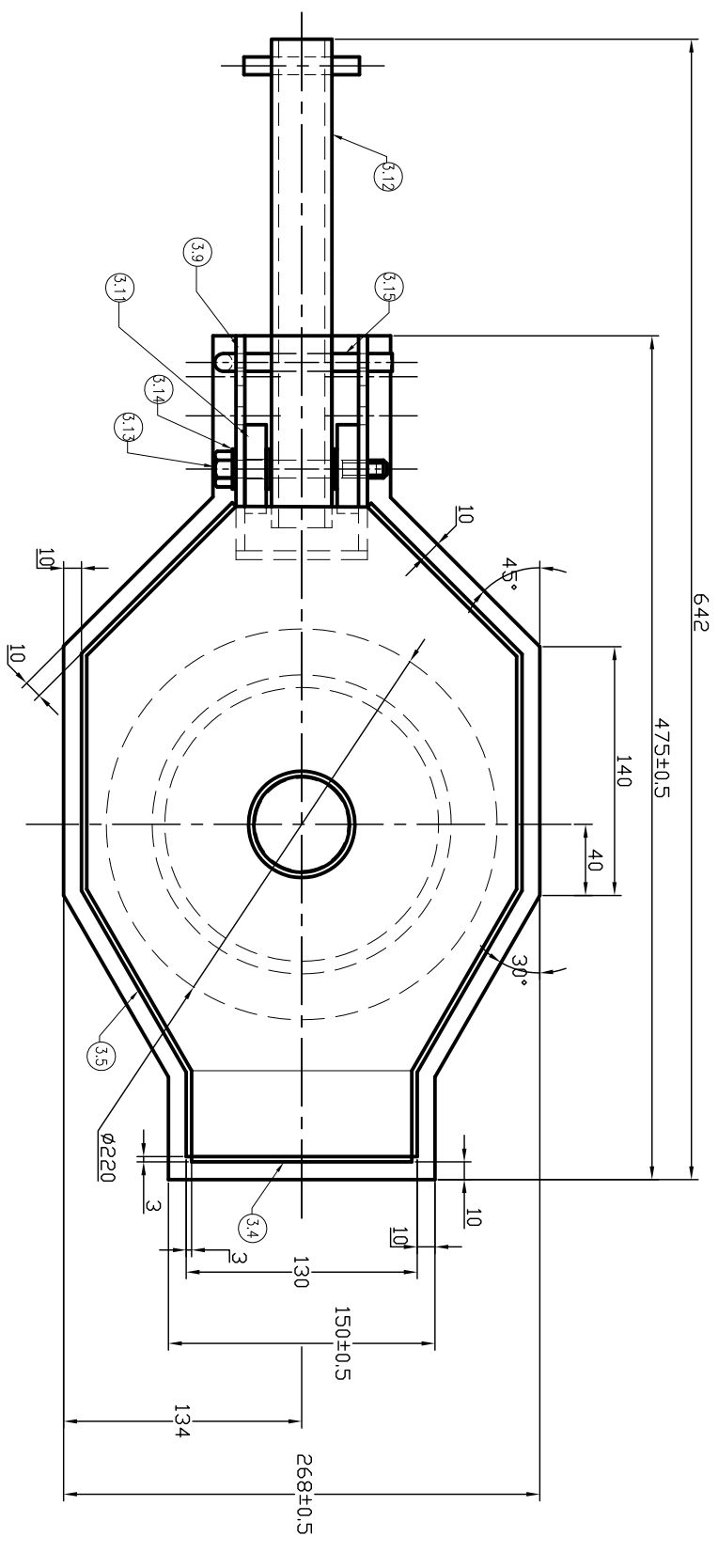
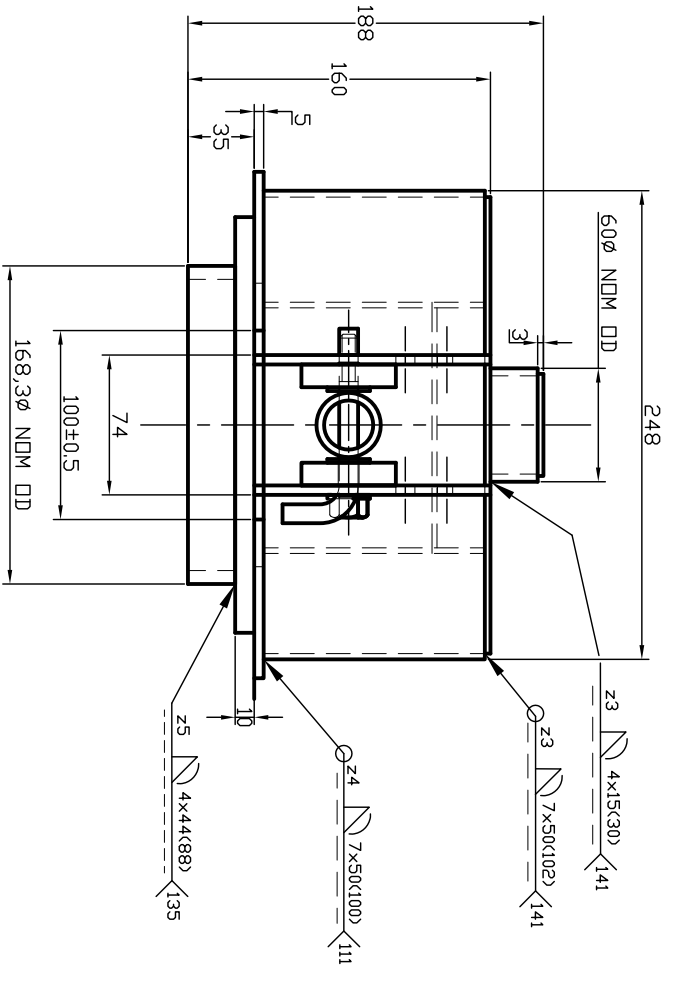
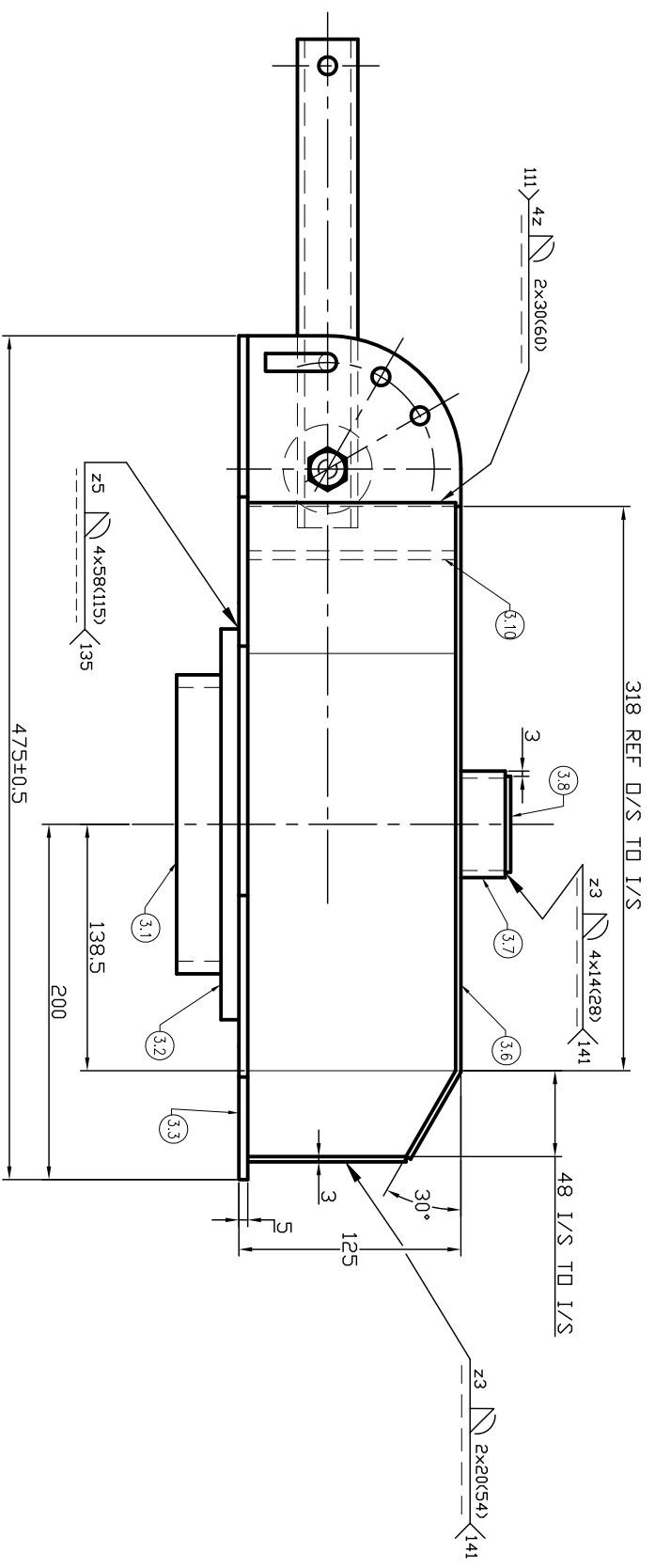
2

3

4

5

6

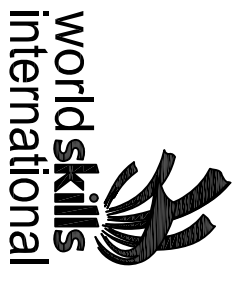


GENERAL NOTES:-
 General Tolerance will be ±1.0mm
 318mm measurement is top part 3.6 outside to inside points
 48mm measurement is inside to inside point
 General Welding Notes
 All welds symbols
 - indicate welding process to be used
 - welds type required

ITEM 3.11 IS A SUPPLIED LASER CUT PART
 ITEM 3.8 IS A SUPPLIED LASER CUT PART
 ITEM 3.12 IS SUPPLIED CUT TO LENGTH
 ITEM 3.7 IS SUPPLIED CUT TO LENGTH
 ITEM 3.1 IS SUPPLIED CUT TO LENGTH
 ITEM 3.14 IS SUPPLIED
 ITEM 3.13 IS SUPPLIED

| ITEM | DESCRIPTION | QTY | MAT'L |
|------|-----------------------------|-----|-------|
| 3.15 | 10mmØ BRIGHT ROUND BAR | 1 | M/S |
| 3.14 | 10mmØ WASHER 2mm | 3 | M/S |
| 3.13 | M10Ø BLACK BOLT | 1 | M/S |
| 3.12 | GUN 34mm NDM DD PIPE | 1 | M/S |
| 3.11 | GUN MOUNT SPACER 12mm PLATE | 2 | M/S |
| 3.10 | GUN MOUNT BACK 5mm PLATE | 1 | M/S |
| 3.9 | GUN MOUNT SIDE 5mm PLATE | 2 | M/S |
| 3.8 | CABIN TOWER TOP 3mm SHEET | 1 | S/S |
| 3.7 | CABIN TOWER 4mm SCH 40 PIPE | 1 | S/S |
| 3.6 | CABIN TOP 3mm SHEET | 1 | S/S |
| 3.5 | CABIN SIDES 3mm SHEET | 2 | S/S |
| 3.4 | CABIN BACK 3mm SHEET | 1 | S/S |
| 3.3 | GUN CABIN BASE 5mm PLATE | 1 | M/S |
| 3.2 | GUN MOUNT FLANGE 10mm PLATE | 1 | M/S |
| 3.1 | GUN MOUNT SCH 40 PIPE | 1 | M/S |

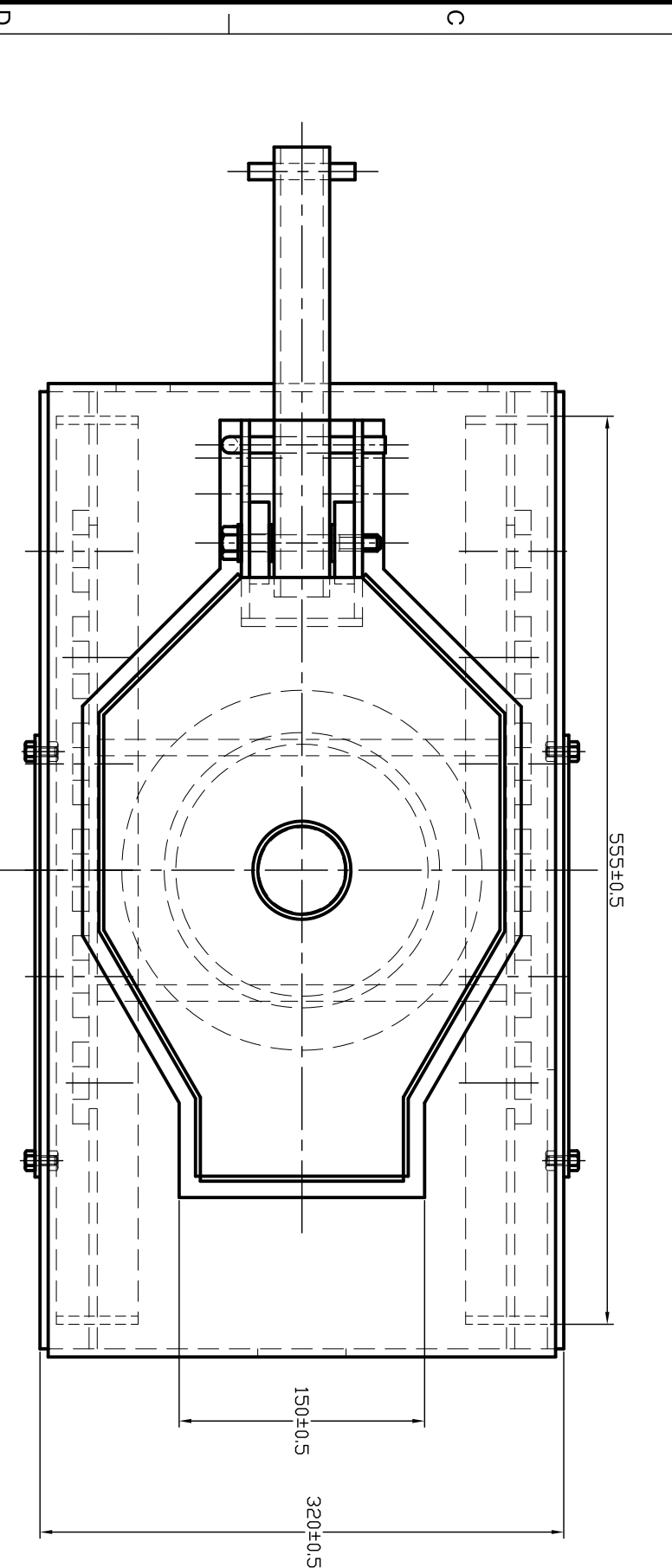
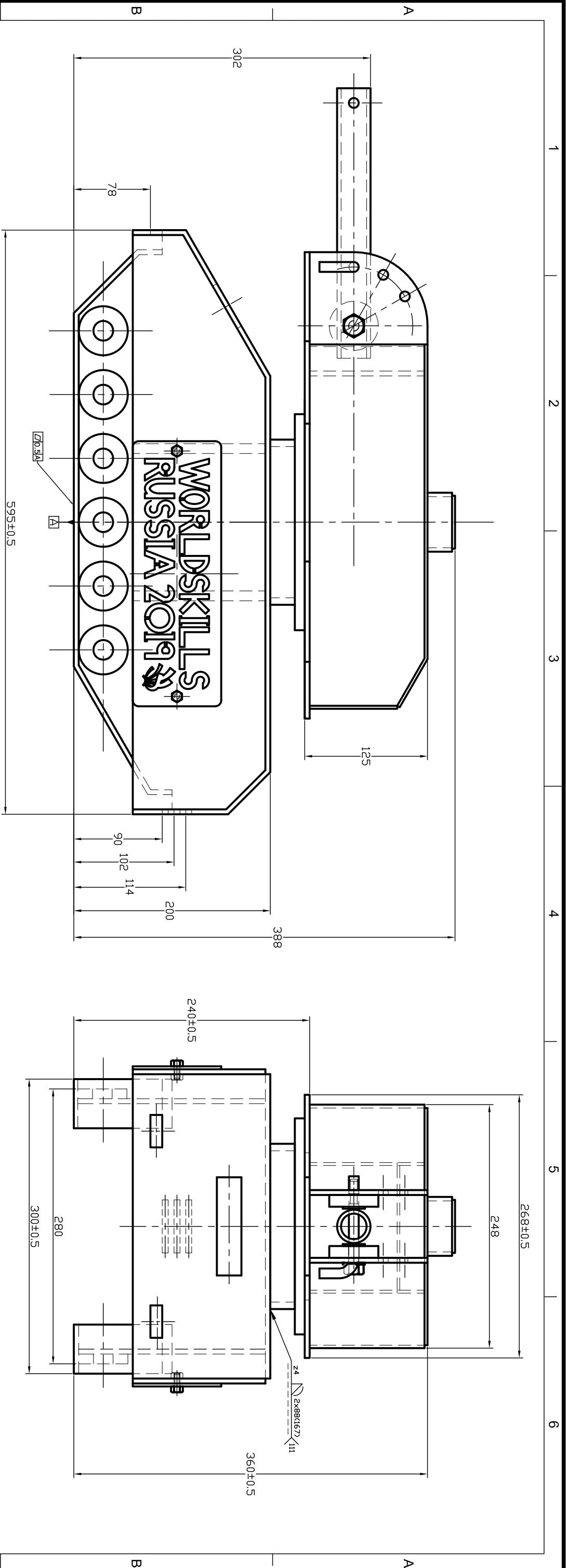
Test Project for the 45th
 WorldSkills
 Competition in Kazan, Russia
 2019.
 Copyright © 2019 WorldSkills
 International.
 All Rights Reserved.



| TECHNICAL DESCRIPTION | SYMBOL |
|-----------------------|----------|
| SQUARENESS | [Symbol] |
| FLATNESS | [Symbol] |
| PARALLELISM | [Symbol] |
| PRIMARY DIMENSIONS | [Symbol] |
| SECONDARY DIMENSIONS | [Symbol] |

Skill:- 42 Construction Metal Work
 Scale: 1:4
 Date: 06-7-18
 Paper: A3
 Drawn / Design by: J.SHARPLES & M. SNACKENBERG
 Description:- Russian Tank

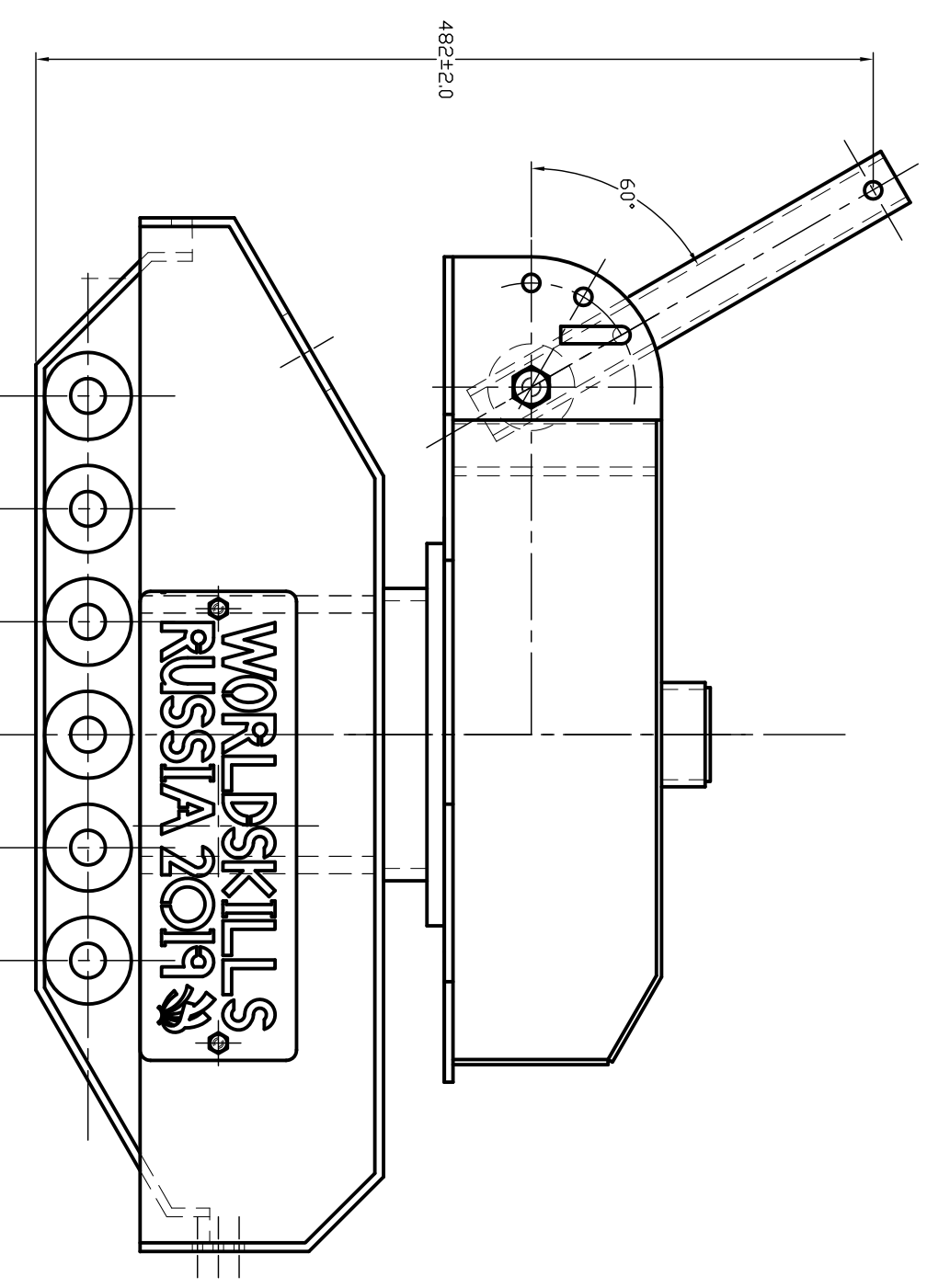
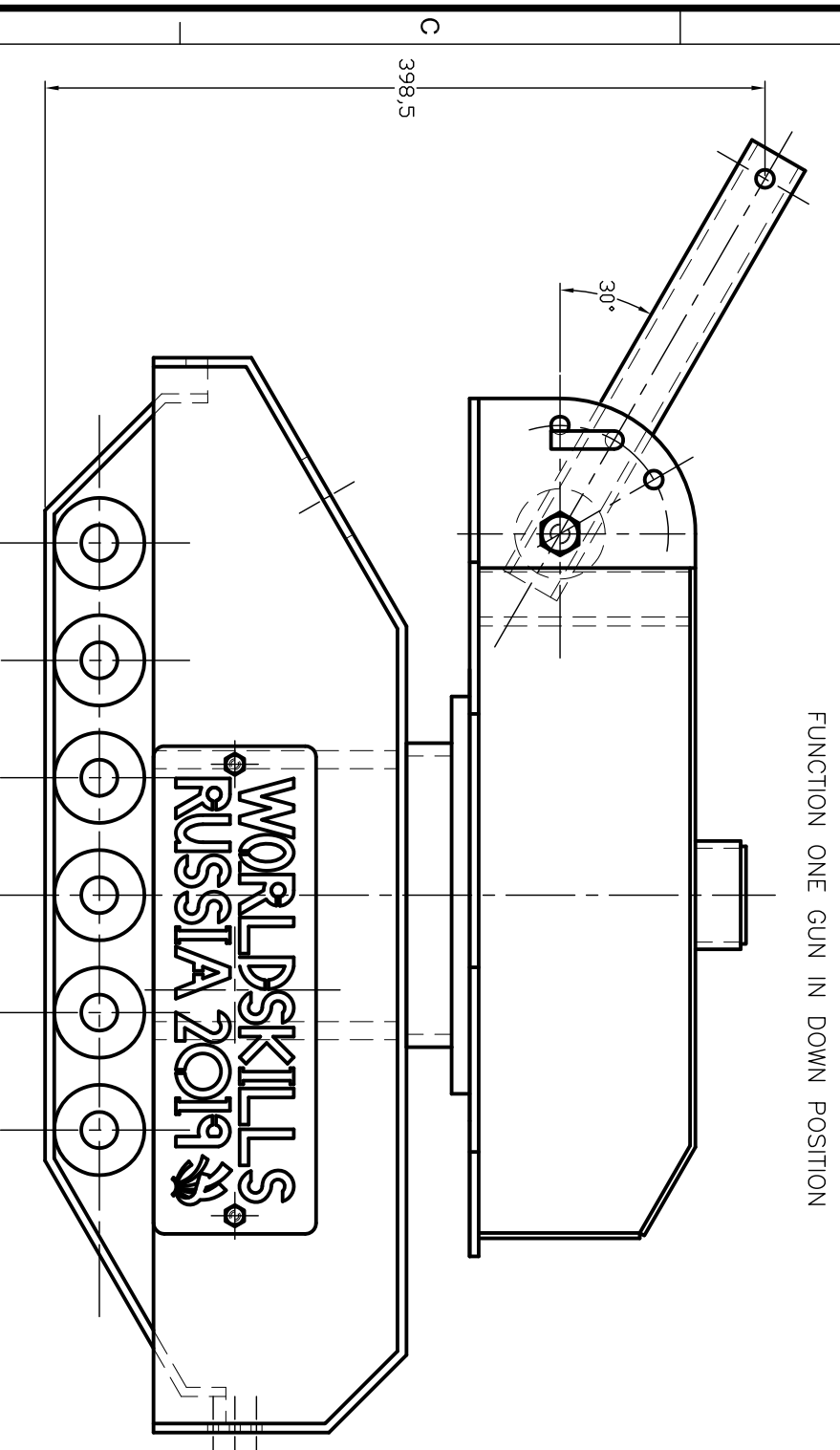
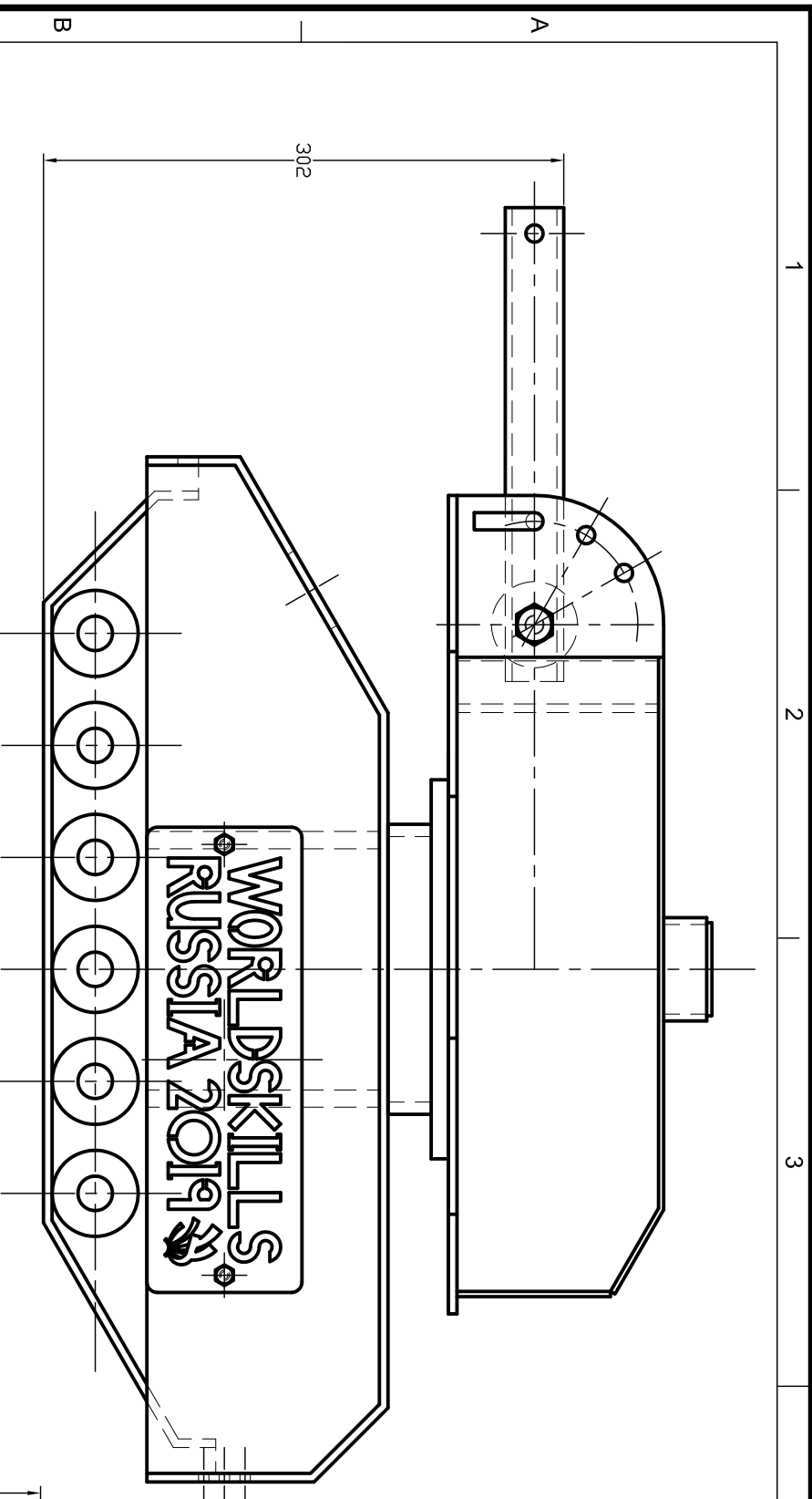
Drawing Name:
 Module Three: Tank Gun Mount
 Drawing No: 6 of 9
 Rev: Ver 4
 Appd :Worldskills
 Page:
 Sign:



GENERAL NOTES:-
 General Tolerance will be between ±1.0mm
 COMPLETED WILL BE CHECK FOR TECHNICAL PERFECTION IN FLATNESS
 [70.5]A General Tolerance ±0.5mm

| | | | |
|---|-------------|---------------------------------|----------------------|
| Test Project for the 45th WorldSkills Competition in Kazan, Russia 2019. Copyright © 2019 WorldSkills International. All Rights Reserved. | | | |
| TECHNICAL DESCRIPTION | | | |
| | SQUARENESS | | PRIMARY DIMENSIONS |
| | FLATNESS | | SECONDARY DIMENSIONS |
| | PARALLELISM | | |
| Skill:- 42 Construction Metal Work Scale: 1:4 Date: 06-7-18 Paper: A3 | | Drawing Name: Final Assembly | |
| Drawn / Design by: J.SHARPLES & M. SNACKENBERG | | Drawing No: 8 of 9 | |
| Description:- Russian Tank | | Rev: Ver 4 Page: | |
| | | Appd :Worldskills Sign: | |

GENERAL NOTES:-
 //1.51A General Tolerance $\pm 1.0\text{mm}$ and $\pm 2.0\text{mm}$
 Function will be check for Technical Perfection and for
 parallelism and height measurement



FUNCTION TWO GUN IN 30° POSITION

FUNCTION THREE GUN IN 60° POSITION

Test Project for the 45th
 WorldSkills
 Competition in Kazan, Russia
 2019.
 Copyright © 2019 WorldSkills
 International.
 All Rights Reserved.



| TECHNICAL DESCRIPTION | |
|-----------------------|----------------------|
| | SQUARENESS |
| | FLATNESS |
| | PARALLELISM |
| | PRIMARY DIMENSIONS |
| | SECONDARY DIMENSIONS |

Skill:- 42 Construction Metal Work

Scale: 1:4

Date: 06-7-18

Paper: A3

Drawn / Design by: J.SHARPLES & M. SNACKENBERG

Description:- Russian Tank

Drawing Name:
 Function Arrangement

Drawing No: 9 of 9

Rev: Ver 4
 Appd :Worldskills

Page:
 Sign:



1

2

3

4

5

6